

### Features

- For LED Outdoor & Industrial Application
- Wide Input Voltage Range
- IP67 Design for Outdoor Installation
- Suitable to Dry, Damp, Wet Location
- High Reliability & Long Life
- Constant Current Design/ Low Ripple Current
- All-Round Protections



### SPECIFICATION

Model Name		MCF-100-700
Output	Rated Power	100W
	Output Voltage	70-143V
	Rated Current	700mA
	Output Ripple Current	±5%
Input	Input Voltage/ Frequency	90-305V / 47-63Hz
	Power Factor	0.97
	Efficiency	90%
	Inrush Current	75A max. @ full load 230Vac / 50Hz, cold start
	Leakage Current	≤0.75mA @ 264Vac
Environment	Operating Temperature	-40°C~+70°C (refer to de-rating curve)
	Operating Humidity	10-100% RH
	Storage Temperature, Humidity	-40~85°C / 0-100% RH
Protection	Over Voltage Protection	200V
	Other Protections	OTP; SCP; Open Circuit
Safety & EMC	Safety Standards	Meet CE EN61347-1, EN61347-2-13
	EMC Standard	EMI : Comply with EN55015 class B. IMMUNITY: Compliant with EN61000-3-2 ClassC, EN61000-3-3 / Compliant with EN61000-4-2, 3, 4, 5, 6, 8, 11 / Compliant with EN 61547
	Pulsation Level	5%
	Surge Voltage	Differential : 2KV / Common : 4KV
	Withstand Voltage (Hipot)	I/P-O/P 3750 Vac : I/P-FG 1875 Vac
	Isolation Resistance	50MΩ min. @ primary to secondary add 500Vdc test voltage
Others	Life Time	50000 hrs
	MTBF	200K hrs
	Dimension (LxWxH) (mm)	170 x 68 x 42.5
	Net Weight / Packing	0.78Kg ; 16pcs / carton

#### Notes:

1. Data at full load and rated voltage, 230Vac/50Hz input, and 25°C ambient temperature unless otherwise specified.
2. Measurement at 20MHz bandwidth oscilloscope (Rated input and rated output)
3. The input voltage information on the label should be marked ±10% less than the original input voltage, to conform with safety regulations.
4. The power supply is considered as a component that will be operated in combination with final equipment. Since EMC performance will be affected by the complete installation, the final luminary manufacturers must re-qualify EMC Directive on the complete installation again.



**FSP TECHNOLOGY INC. (Russia Office)**

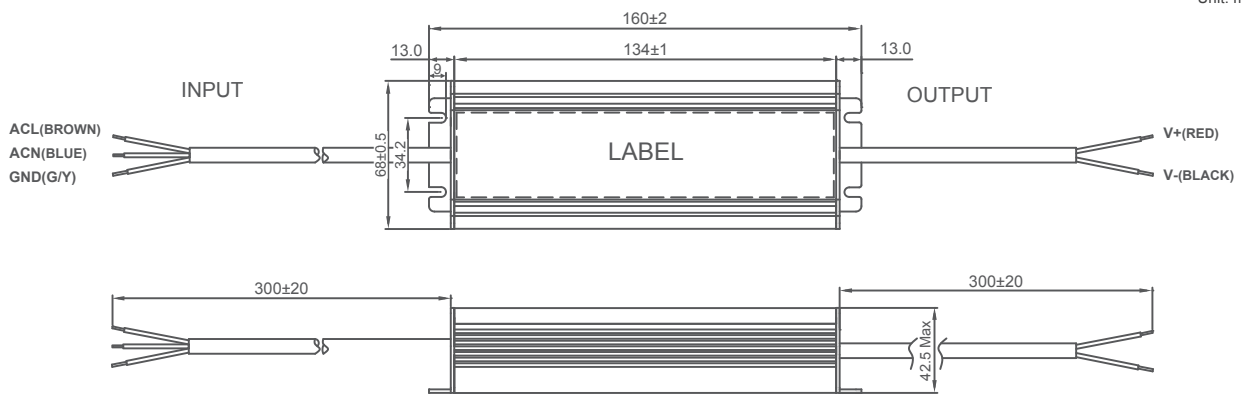
www.fsp-power.ru / rusupport@fsp-power.ru

119571 Moscow, Akademika Anokhina str. 5/3 office 69

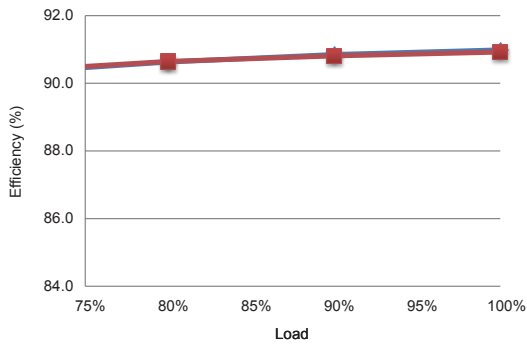
TEL/ FAX : +7(499)730 44 10



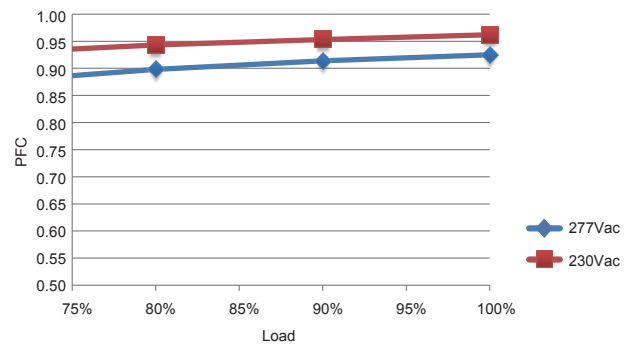
Unit: mm



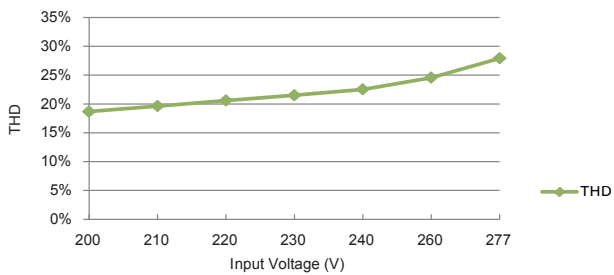
Efficiency



PFC vs Loading



THD vs Input Voltage



Derating Curve

